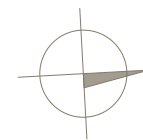
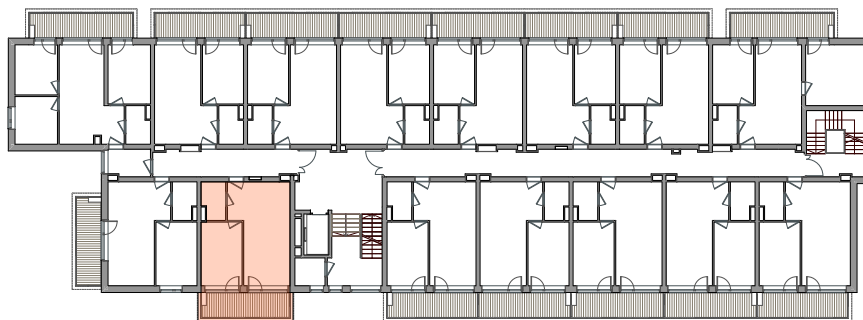


PIĘTRO II
2P+AK
39,00 m²



POWIERZCHNIA **39,00m²**

BALKON	9,19 m ²
1. SALON	15,45 m ²
2. ANEKS KUCHENNY	8,32 m ²
3. POKÓJ	11,41 m ²
4. ŁAZIENKA	3,81 m ²

