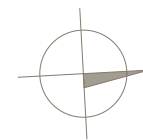
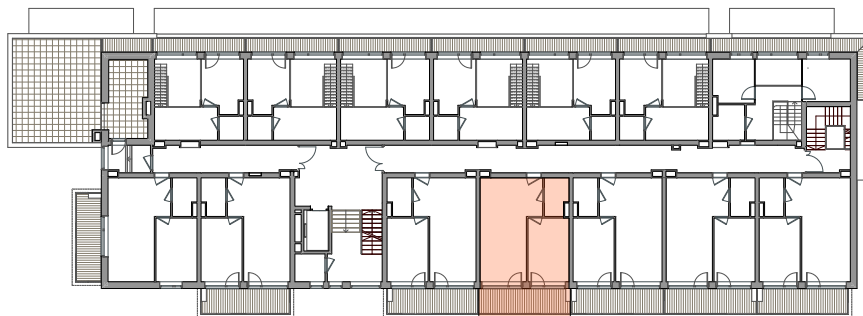


PIĘTRO V  
2P+AK  
39,00 m<sup>2</sup>



POWIERZCHNIA **39,00m<sup>2</sup>**

BALKON 9,50 m<sup>2</sup>

- 1. SALON 15,45 m<sup>2</sup>
- 2. ANEKS KUCHENNY 8,32 m<sup>2</sup>
- 3. POKÓJ 11,41 m<sup>2</sup>
- 4. ŁAZIENKA 3,81 m<sup>2</sup>

